

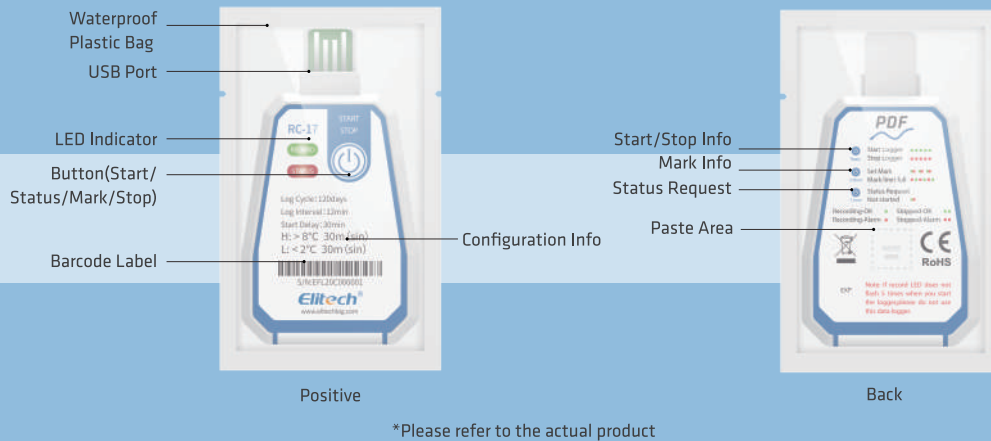
Instruction Manual RC-17/17N

Disposable Temperature Recorder



Elitech
Innovation Preceding All

Product instruction diagram



product description

This temperature recorder is mainly used for temperature monitoring and recording of food and medicine storage and transportation environments, such as refrigerated bags, refrigerated trucks, containers, etc.

This product is connected to a computer via USB, and the recorded data is directly output as a PDF report; the temperature probe is built-in, powered by a CR2450 wide temperature lithium battery, and the waterproof level reaches IP67. The product is equipped with a barcode.

Technical Parameters

All function-related parameters of this recorder are configured by the factory, and users can customize some of these parameters according to their needs;

Measuring temperature	-30°C ~ 70°C resolution 0.1°C	Data interface	USB2.0
Storage temperature	-30°C ~ 70°C	Report type	PDF format data report
Temperature measurement accuracy	0.5°C/0.9°F (-20°C ~ 40°C) ; 1°C/1.8°F (other)	Power supply	Built-in CR2450 wide temperature lithium battery
Sensor	Built-in NTC	Battery life	2 years of storage and use in normal temperature environment
Recording	capacity of 16000 groups (maximum)	Protection grade	IP67
Recording period	6, 15, 30, 60, 90, 120, 180 days (customizable)	Dimensions	93*58*8mm (length * section * height)
Alarm type	single type (Sin), cumulative type (Cum)	Weight	about 20g
Alarm threshold	Factory default (customizable)		

① Note: Before the recorder is started, it is recommended to store at room temperature

Parameter description: Maximum 16000 groups, the actual recording capacity is different due to different recording periods;
Start-up delay: After the recorder is started, it waits for the set delay time to start recording, and the delay time can be customized;
Alarm threshold: According to the threshold, the alarm interval can be set. The temperature recorder supports a temperature upper limit and a temperature lower limit setting;

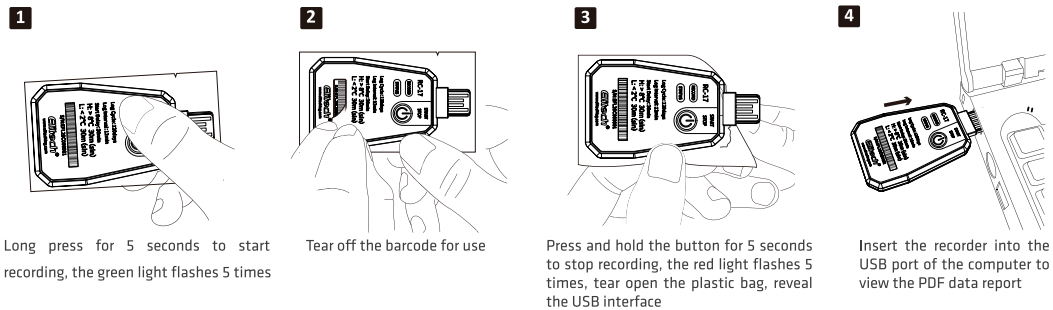
H	The interval greater than H is the ultra-high temperature alarm interval
L	The interval less than L is the ultra-low temperature alarm interval

Alarm delay:

Single type	the recorder performs a single timing of continuous over-temperature events
Cumulative type	the recorder counts all over-temperature events cumulatively

Alarm delay: When the temperature enters the over-temperature alarm zone, the recorder will not alarm immediately. Only when the over-temperature duration exceeds the alarm delay, the alarm will start;

Operating instructions



NFC operation instructions

1. Install and log in to the APP

Use the mobile browser to scan the QR code or download and install 'Elitech iCold' through the mobile application center; open the APP and follow the prompts to register and log in to a new account.

2. Parameter setting

Click the navigation button in the upper left corner of the APP, select the NFC temperature label, and then approach the device to view the data (enable the NFC function of the mobile phone).

Click the (symbol) in the upper right corner to set the parameters. After the setting is completed, the mobile phone is close to the device and click the 'OK' button to save the parameters (the parameters are only allowed to be set when the device is not recorded)

3. View and export data

After the phone near the device, reading device data, click on the upper right corner to select the desired report format export data report.

