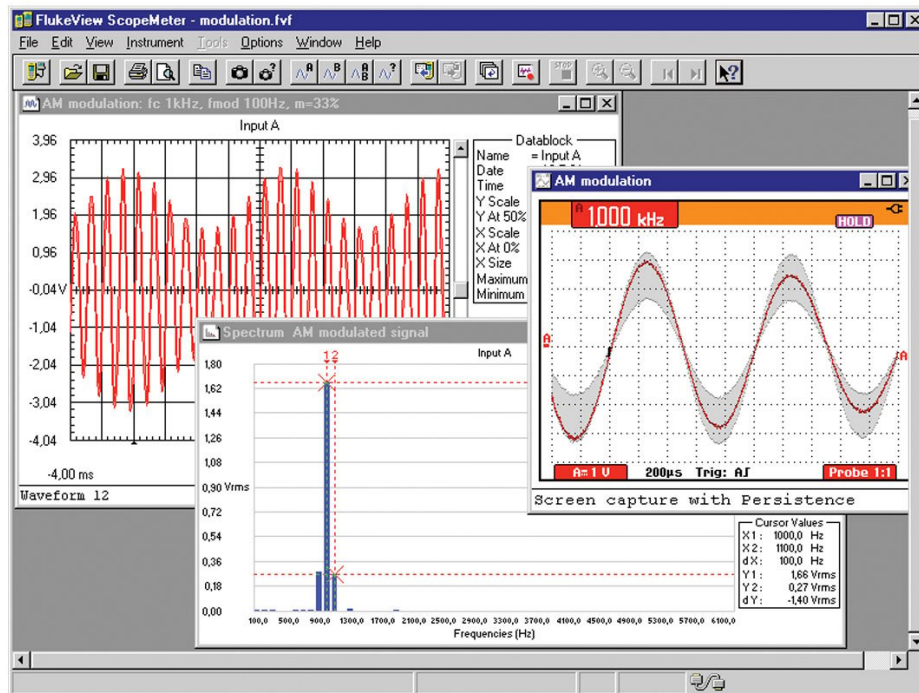


# Fluke SW90W FlukeView-1 ScopeMeter Software



## Key features

- For ScopeMeter(R) 190 Series II and 120 Series
- Windows XP/Vista/Windows 7/Windows 10
- Requires one free RS-232 port (COM port) or a free USB-Port
- Requires optional PM9080 RS-232 Adapter/Cable or an optional OC4USB-cable (190C Series, 120 Series)

Note: 190 Series II comes with USB-port and USB-cable included. For 190 Series II no additional hardware is required.

## Product overview: Fluke SW90W FlukeView-1 ScopeMeter Software

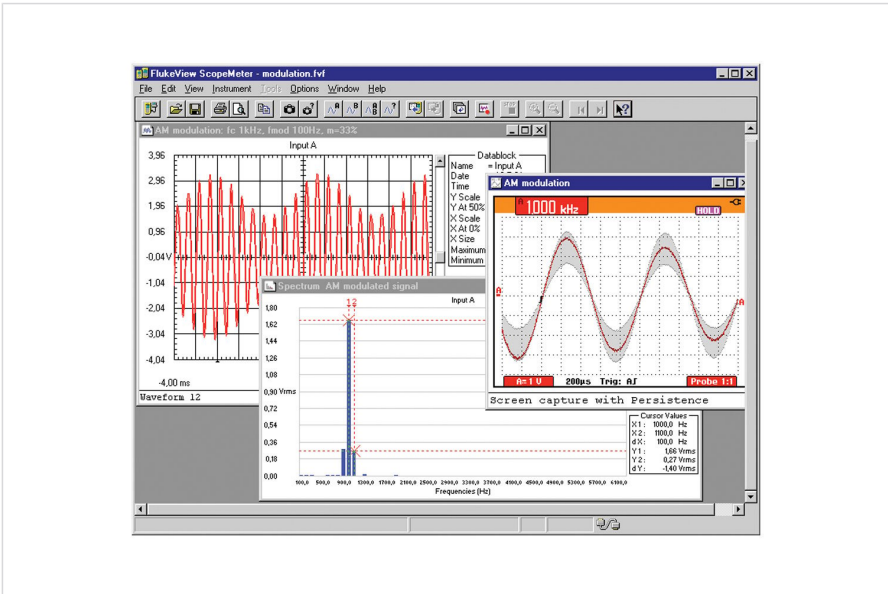
FlukeView-1 software adds PC power to your Fluke ScopeMeter test tool

FlukeView-1 ScopeMeter software helps you get more out of your [ScopeMeter 190 Series II Test Tool](#) by:

- **Documenting:** Transfer screens, waveforms, and measurement data from the ScopeMeter Test Tool to your PC for printing, or to import data to other programs.
- **Archiving:** Store and retrieve waveforms with text annotations and create your own library for easy reference and comparison.
- **Analysis:** Gather valuable measurement data and enable cursor measurement to reveal relationship and conditions.

Extended recording of up to four user-selected measurements help you monitor and analyze slow moving signals and related events. Upload waveforms to the PC and use cursors for detailed measurements. Perform waveform analysis, including analyzing harmonics.

# Ordering information



## Fluke SW90W

**Fluke.** *Keeping your world up and running.®*

**Fluke Europe B.V.**

P.O. Box 1186  
5602 BD Eindhoven  
The Netherlands  
[www.fluke.com/en](http://www.fluke.com/en)

©2023 Fluke Corporation. All rights reserved.  
Data subject to alteration without notice.  
07/2023

**For more information call:**

In Middle East/Africa  
+31 (0)40 267 5100

**Modification of this document is not permitted  
without written permission from Fluke Corporation.**